

PRODUCT NAME

Raymix – WP (Integral Liquid Waterproofer)

MANUFACTURER

Société Raymond Barakeh SAL.
Bauchrieh, Industrial City, Sector 7, 40 – Street 86
Ph. 00961 1 690594 www.barakeh.com Beirut – Lebanon.

DESCRIPTION

Raymix-WP is a permeability reducing admixture in liquid form for use in all types of mortar and concrete mixes. It is particularly suitable for use in ready-mixed concrete on all types of structural concrete. It is also usefully employed in all precast concretes involving the use of wet concrete, semi-dry concrete and cast stone.

Raymix-WP is formulated from carefully selected raw materials and is manufactured under controlled conditions to give a consistent product. It is based on a blend of long chain carboxylic acids to give maximum reduction in permeability without inhibiting side effects. This, results from positive chemical action which creates a network of insoluble water resistance material with the pores of the cement matrix.

FEATURES

- Permeability reduction can be achieved without significant changes in strength.
- Raymix-WP can be added by means of an automatic dispenser.
- It can be used with grey or white Portland cements or with pigmented mixes to help prevent unsightly efflorescence and to improve the colour retention of pigmented concrete.
- Precast units, blocks and in situ concrete containing this type of waterproofing agent have been shown to retain their original clean appearance when exposed to the elements for considerable periods.
- The durability of concrete finishers is increased since the penetration of rain and dew is greatly reduced giving improved resistance to frost damage.
- Aggregates 'mottling' can be prevented in most mixes.
- The reduction in permeability obtained with Raymix-WP is long lasting.
- Little, if any, extra air is entrained in the system.
- No problems of settlement in storage are encountered.

PHYSICAL AND CHEMICAL CHARACTERISTICS

Appearance	Brown
Specific Gravity at 20°C.	1.08
Viscosity at 20°C.	26 cP
pH	7-8
Chloride Content	Nil.
Storage life in manufacturer's drums	Indefinite.
Freezing Point	- 5°C

The information and data given is to the best of our knowledge reliable, but is given without obligation.

COMPATIBILITY

With cements:

Raymix-WP is compatible with all types of Portland cements, including sulphate resisting cements.

With other admixtures:

Raymix-WP is compatible with all Raymix Building Products admixtures.

It is advisable to add all admixtures separately to a cementitious mix.

METHOD OF USE

Raymix-WP is supplied ready to use, and may be added to the mix water prior to addition to the aggregate or by means of an automatic dispenser.

Raymix-WP will not entrain air when used in wet concretes, but will plasticize the mix and cause a significant increase in workability.

It is necessary to reduce the free water content of concrete mixes containing Raymix-WP to maintain constant workability. If the free water content is not reduced, then an increase in workability will result and there may be some loss in compressive strength.

No extension of normal mixing time is necessary.

ADDITION RATES

The performance of Raymix-WP is best assessed after preliminary tests on site using the actual mix under consideration. The material is found to be effective in a wide range of concrete.

Because of this range of applications it is difficult to specify a precise level of addition for optimum results to be achieved.

Furthermore the degree of reduction in surface permeability required can be achieved by varying the dosage level which typically lies between 150 - 250 ml Raymix-WP per 50 kilograms of cement.

For advice and assistance with your trials we would recommend that you consult your agent.

EFFECTS OF OVERDOSING

Tests have shown that the addition of Raymix-WP to concrete mixes at up to double the recommended level of addition caused only a slight loss in strength and minimal additional air entrainment.

HEALTH AND SAFETY

Raymix-WP is formulated from chemicals which present no fire or health hazards. However, the product is mildly alkaline and contact with the skin and eyes should be avoided by use of protective clothing. Spillages, should be washed down immediately with cold water.

APPLICABLE STANDARDS

BS EN 934-2, IS 2645-2003, ASTM C494 Type A & D.

PACKAGING

Raymix-WP is supplied in 20, 25, 125, 210 & 1000 litres free, non-returnable containers.

STORAGE

12 months in undamaged, tightly sealed containers.

Raymix-WP requires should preferably be stored protected from frost. If the product does become frozen it should be carefully mixed after thawing out to restore it to its normal state facilities.

TECHNICAL SERVICE

The Technical Department is available to assist you in the correct use of our products and its resources are at your disposal entirely without obligation.

Contact:

Société Raymond Barakeh SAL
P.O.Box 119737 – Beirut – LEBANON

Phone : 00 961 1 690594 – 3 260989

Fax: 00 961 1 690594

E.Mail : info@barakeh.com

Http://www.barakeh.com

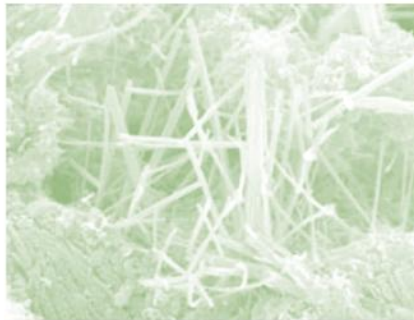
PRODUCT WARNING

Société Raymond Barakeh SAL has no control over the use or storage of this product and therefore does not accept any liability in this regard. Any verbal advice given should not be regarded as authoritative information. This information is subject to change without notice, therefore all applicators should ensure they have current information. This product is intended for the use only of skilled tradesmen and where applicable, statutory licensed tradesmen experienced and trained in the use of this product. This product is warranted to be of uniform quality within the manufacturer's tolerance. This manufacturer has no control over the use or misuse of this product, therefore no warranty rests or implied, is or can be made either as to the effects of such use. The manufacturer's obligations shall be limited to replacing product proving to be defective.

Photos shot through an electronic microscope, demonstrate how crystalline waterproofing can physically block the moisture coming through the pores and hairline cracks in concrete. Waterproof Magazine.



Void clearly visible



Crystals clearly visible



Void completely sealed